

Network Magazine

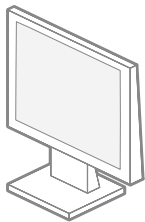
Huddersfield Parish Church and the Methodist Mission



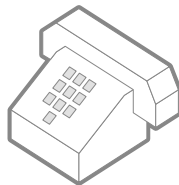
Sep/Oct 2010



30p



YOUR CONTACTS



Huddersfield Parish Church

Registered Charity No 1134839

Byram Street, Huddersfield. HD1 1BU

Tel/Fax: 01484 427 964

E-Mail: huddspc@btconnect.com

Website: www.huddersfieldparishchurch.org

The Vicar:

None at present

Wardens:

Pearl Baldry

Barbara Nightingale

Treasurer:

Anne John

Gift Aid Officer:

Peter Chadwick

Organist:

Stephen Smith

Music Director:

Eleanor Bosworth

Church Administrator:

Paula Yeadon

01484 427 964

Magazine Editor:

Peter Chadwick

Huddersfield Methodist Mission

3-13 Lord Street, Huddersfield. HD1 1QA

Tel: 01484 421 461 Fax: 01484 423 797

E-mail: huddsmission@btconnect.com

Website: www.huddersfieldmission.org.uk

The Minister:

Revd Alan Boyd

Caretaker:

Steven Ward

Treasurer:

Allen Illingworth

Choir Mistress:

Margaret Hardcastle

Mission Administrator:

Heather Weatherill

Society Stewards:

Pat Mudd

Jean Blount

Irene Saul

Registered Charity Numbers:

Huddersfield Methodist Mission: 1129144

Huddersfield Plus Point: 1100950

The Welcome Centre: 1081556

Huddersfield Guild for the Disabled: 223901

THE CHURCH MISSION STATEMENT

We discern that God is calling us to be Christ's faithful witnesses, growing in prayer, proclamation and partnership with others.

CONTENTS

Page

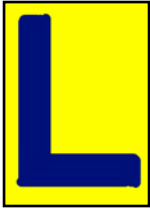
Your contacts	2
A Message from the editor	4
Our New Website	5
The Interregnum - What does it mean?	6
Parish News and Diary	9
Huddersfield Mission Diary	11
Julia's Sponsored Ride	16
It's a Boy	21
Kid's Corner	23
Puzzle Page	24
News from your PCC	25
Finance Matters	29
HPC Weekly Services	32
Mission Weekly Services	32

MAGAZINE CONTRIBUTIONS

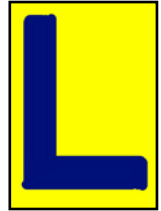
The editor welcomes and encourages contributions to the church magazine. The preferred method is by email, however any other means will be just as welcome:

E-mail sp@spchadwick.force9.co.uk

PLEASE NOTE: All contributions to the magazine should be sent before the 15th of the previous month to guarantee publishing in the next issue of the magazine.



A MESSAGE FROM THE EDITOR



OK, so I made a couple of errors in our first issue, it's still not bad for a learner. The main one was that the magazine was removed from the website within a couple of days because there was concern over individual privacy and whether or not we had the right to display our advertisements on the internet. We have since established with our website providers that there are no objections to including the magazine with its adverts on our website. Also there should not be a privacy problem as all the information is already available in paper form. However, there were still some concerns so we have eliminated all personal telephone numbers and addresses from the magazine. So it's back on the website. Check it out (see later).



Now, what did you expect to see on the page labelled 'Adult Play-time'? Some people (mentioning no names even though she has now left us) thought the title had different connotations. I have changed the title to Puzzle Page, which is a lot more sedate though much less interesting.

Did you try the Sudoku by the way? Wasn't it hard? I struggled and even Sandra who now only does the ones classed as fiendish, struggled also, so for this issue I have found one classed as only moderate to give me a chance.

Now that our beloved vicar has left us, we have no regular Letter from the Minister from our church. Rev Alan Boyd will continue to write in every other issue as before and we intend to fill the space between with notes from the Wardens or anyone else we can bully into writing some meaningful message.

That's all for now but don't forget I look forward to receiving any ideas for the magazine and to any constructive criticism you may have.





OUR NEW WEBSITE



We have now launched our new website. Two versions were presented to the PCC and we now have their final decision. Regular visitors to the previous church website will recognise the address because we have kept the old one and had it linked through to the new site:

www.huddersfieldparishchurch.org

As reported on the previous page we now have the Parish Magazine on the site. You can view it in full colour and those with colour printers can download it and print it free of charge.

Also, we now have a new Website Manager, Graeme Blackwell, so if you have any comments on the layout or contents or would like to see some information published on the website, then let Graeme know.

Peter Chadwick



Coffee morning: We hold a coffee morning on the last Wednesday of each month at the Keys Restaurant. 10.15am to 11.15am. Why not join us for the price of a coffee and have fun. The next coffee morning will be on Wednesday 29th September and we look forward to seeing many people.



Thought For Today

If you see someone without a smile, give him one of yours.

The Interregnum - What does it mean?

A strange word that not everyone understands. Strictly speaking it describes the period between the reigns of two monarchs. However, the Church has adopted it as the name for the time between one priest leaving a parish and another being installed.

During this period the Wardens are in charge of the church and its properties. As far as possible everything will go on as usual but this can't be guaranteed. Barbara has worked very hard and we have someone to take all our Sunday services up to Christmas. We do have a few vacancies for Wednesday Communion.

Some weeks we will know the priest; on others they will be new to us. This will be a time of change, not in the actual service but in style, voice and personality. These changes are to prepare us for the coming of a new vicar. We have been told this is most likely to take place in the New Year.

Your PCC members have worked very hard in preparing a description of our church and parish. This will be available to priests who are seeking a new challenge. This Parish Profile, currently with the Archdeacon, will give an insight into who we are and what being our vicar would be like.

We would ask you to pray that the right man or woman will come forward to serve this parish and its people.

Pearl Baldry
Church Warden

MEMORIES OF CHILDHOOD - I DON'T CARE

I learnt the poem on the next page, at school, author never known or forgotten. Perhaps you can let me know his or her name. This was much better than all that contemporary stuff we were reading at the time and now forgotten completely.

Pearl

I DON'T CARE

I don't care if I did upset the jam
And I won't say I'm sorry
Till I feel I am
I'm glad I snapped at Nanny
And I'm glad I pulled her hair
You can stand me in a corner too
But I don't care

I'll go out in the garden
When the snow is deep and high
Without any shoes on
And I'll catch a cold and die
And mummy and daddy will be a pair
Of orphans then
But I d'd'don't c'c'care

SITUATIONS VACANT

Huddersfield Parish Church has the following vacancies:



Bell ringers
Flower arrangers
Kitchen staff
Servers
Saturday hosts
Seamstress (to repair clerical robes)
Sidespeople



Pay: Lots of appreciation and self esteem

The more people we have, the less often your name will be on the rota. If you are interested in any of these please speak to a Church Warden.

Oh, and one Vicar!



Highfield

FUNERAL SERVICE

WEST CROFT, TRINITY STREET, HUDDERSFIELD, HD1 4DT

FUNERAL DIRECTORS FOR OVER 150 YEARS

FUNERAL PRE-PAYMENT PLANS ARRANGED

24 HOUR SERVICE

RESIDENTIAL FUNERAL HOME

CATERING FACILITIES

HUDDERSFIELD (01484) 428243

PARISH NEWS AND DIARY

On Sunday 4 July at the 10am service we welcomed Nico Parsons who was baptised into our church. We also welcome Adam and Natasha, Nico's parents onto the Electoral Roll of our church.

After the 10am service on Sunday 22 Aug we had another baptism where we welcomed Blessing Enibokun Weahewere into our church.

The pub lunch in July took place at the Will's O' Nat's at Blackmoorfoot. Only five people turned up but the atmosphere and the food were very good. There will be no pub lunch in August due to holidays. Check the notices for the September venue.

- | | |
|------------|--|
| Fri 9 Jul | 7.30pm Catherine's farewell dinner at Bradley Park Golf Club where dozens turned up to wish Catherine and her family well. |
| Sat 10 Jul | The Huddersfield Carnival visited the church where it received a blessing on Church steps by Catherine. |
| Sun 11 Jul | Catherine's last service with us. |
| Fri 6 Aug | Julia set off on the cycle venture (see feature pages). |

Diary For the next few weeks

See the service sheets and the notice boards for details of venues, dates and times and also who to contact.

- | | |
|----------------------|--|
| Thu 9 Sep | 12.00 Pub lunch. Venue TBD. Watch for notices. |
| Wed 15 Sep | 7.30pm PCC Meeting |
| Thur 16 Sep | 6.30pm Alpha Course Launch at The Mission |
| Sat 2 Oct | Harvest Meal (see notices) |
| Sun 3 Oct | 10.00am Harvest Festival service with Rev David Earl |
| Wed 6 Oct | 1.15pm Luncheon Club |
| Sun 10 Oct | 6.00pm Evensong with the Oddfellows |
| Mon 11 Oct | Art class open evening for exhibition |
| Tue 12 to Tue 26 Oct | 26 Oct - Art exhibition in church. |
| Wed 20 Oct | 7.30pm PCC Meeting |
| Wed 3 Nov | 1.15pm Luncheon Club |
| Sun 7 Nov | Next issue of the Network Magazine |

The average person will walk the equivalent of five times around the earth in their lifetime, approximately 115,000 miles!!!

Foot pain?

Are you suffering from:

- ❖ Corns, Callus
- ❖ Thick nails or fungal nails
- ❖ Ingrown toenails
- ❖ Verrucae
- ❖ Heel, arch, and general foot pain
- ❖ Heel Spurs
- ❖ Plantar faciitis
- ❖ Skin infections

If so don't suffer in silence! Your feet are important they are needed to carry you through your whole life time...

Call K.C.M Chiropody for your appointment today!

Kristal C Moses (Senior Chiropodist/Podiatrist)
BSc Hons Podiatry SRCh M.Ch.S (HPC registered)

07562142571 or 01484 514451

Located at:

Integrated Health Practice

Cote Royd House

7 Halifax Road

Edgerton, Huddersfield. HD3 3AN

www.kcmchiropody.com



HUDDERSFIELD MISSION

SPECIAL SERVICES & DATES SEP/OCT 2010

Thur 2 Sep	7:30pm Circuit Missions & Ministries Unit meeting @ Linthwaite Methodist Church
Sat 4 Sep	District Synod @ Christ Church, Ilkley
Sun 5 Sep	11:00am COVENANT SERVICE & COMMUNION CAFÉ CHURCH (11:00 Coffee, 11:15 Worship & Communion, 12:00 Shared Lunch, 1:00 End) – (Rev. Alan Boyd) 6:00pm Joint Huddersfield Pennine & East Circuit Service @ Dalton Methodist
Thur 9 Sep	2:00pm Café “Talking About Life, Exploring Our Faith” group 7:30pm Huddersfield Pennine & East Circuit Preachers and Worship Leaders
Sun 12 Sep	10:30am Morning Worship (‘Own Arrangement’ Service) 6:00pm Service of Celebration and Prayer for Mission and the Town Centre Alpha Course at Gledholt Methodist Church, Edgerton Grove Rd, Gledholt.
Mon 13 Sep	2:30pm Mission Café Committee 7:30pm ‘Churches Together in Huddersfield Town Centre’ meeting @ Waverley URC
Tue 14 Sep	7:30pm Joint Huddersfield Pennine/East Circuit Meeting @ Mission
Thur 16 Sep	2:00pm Café “Talking About Life, Exploring Our Faith” group 6:30pm Town Centre ALPHA Course Launch & Buffet in Methodist Mission Café
Sun 19 Sep	10:30am Morning Worship (Raymond Brook)
Tue 21 Sep	11:30-12:30 United Nations International Day of Prayer for Peace – Vigil - Venue TBC
Wed 22 Sep	7:00pm Church Council (non-business)
Thur 23 Sep	2:00pm Café “Talking About Life, Exploring Our Faith” group 6:30pm Huddersfield Interfaith Council meet- ing @ Sikh Temple, Prospect Street
Sat 25 Sep	Daytime - HOPE IN GOD’S FUTURE Circuit activities & event @ Lindley Methodist Church.
Sun 26 Sep	10:30am Morning Worship (Rev. Alan Boyd)
Tue 28 Sep	2:30pm Circuit Network ‘Sunshine Bags’ dedication service at Crosland Hill
Thur 30 Sep	2:00pm Café “Talking About Life, Exploring Our Faith” group 7:00pm Town Centre ALPHA Course in the Methodist Mission Café



- Sat 2 Oct 10:30am - 4:00pm Churches Regional Commission for Yorkshire and Humber - Regional Interfaith Event - "Here I am Lord - responding to God's Call in Neighbours of Other Faiths" – held @ Huddersfield Methodist Mission
- Sun 3 Oct 11:00am CAFÉ CHURCH for HARVEST FESTIVAL (11:00 Coffee, 11:15 Worship, 12:00 Shared Lunch, 1:00 End) – David Harris
- Thur 7 Oct 7:00pm Town Centre ALPHA Course in the Methodist Mission Café
- Sun 10 Oct 10:30am Morning Worship (Ieuan Jones)
- Thur 14 Oct 2:00pm Café "Talking About Life, Exploring Our Faith" group
7:00pm Town Centre ALPHA Course in the Methodist Mission Café
- Sat 16 Oct 7:30pm Circuit Missions & Ministries PRAYER LABYRINTH @ Linthwaite M. Church
- Sun 17 Oct 10:30am Morning Worship & Communion (Rev. Alan Boyd)
- Mon 18 Oct 2:30pm Mission Café Committee
- Tue 19 Oct 8:00pm Taizé evening for @ Mission
- Thur 21 Oct 2:00pm Café "Talking About Life, Exploring Our Faith" group
7:00pm Town Centre ALPHA Course in the Methodist Mission Café
- Sat 23 Oct 12:00-1:00pm Huddersfield Interfaith Council 'Peace Vigil' in town centre for Week of Prayers for World Peace
- Sun 24 Oct 10:30am Morning Worship (Dr. Roy Squires)
- Wed 27 Oct Daytime. Steve Ward (Mission Caretaker) sponsored walk to Leeds in memory of wife Pat Ward
- Thur 28 Oct 7:00pm Town Centre ALPHA Course in the Methodist Mission Café
- Sun 31 Oct 10:30am Morning Worship (Re. Cyril Blount))



MISSION NEWS ETC. FOR SEPT/OCT **NEW SINGLE HUDDERSFIELD METHODIST CIRCUIT** **FROM 1st SEPTEMBER 2011**

THE ANSWER IS A RESOUNDING 'YES'. "To what?" I hear you ask. Huddersfield Pennine (our Circuit) and Huddersfield East met together in June at a joint Circuit meeting to discuss and decide upon whether or not we should create a new, single, HUDDERSFIELD METHODIST CIRCUIT from 1st September 2011.

The intention is to make us a more effective and stronger Christian presence in the town, the villages, valleys, and area that we serve. The leadership teams of the two Circuits have worked hard on this over the past year or two. Here at the Mission (as in all the churches) we've played our part in expressing opinions, providing information, offering our own vision for what the future might be. A Circuit Steward from the East Circuit – JEAN DELANEY - presented the story, the case, and the possibilities to a combined meeting. Then she, and our two superintendents, STEVE DAY and DAVID BIDNELL took questions, and expanded on some points.

We then went into our individual Circuit meetings for a vote and came back to each other with the terrific news that we had overwhelmingly decided to join together to become a new Circuit (voting was 86% 'for' in Pennine and 89% 'for' in East Circuit).

Of course there's now lots of detail to work on, and a whole series of Leadership Team and other meetings are planned for the next year. We'll also be having combined Circuit meetings from now on (splitting off to do our own unique business at different times), but we've made the decision, and we're going to step out in faith and in God's grace. This is dramatic, fresh, positive, scary, exciting, and the right thing to do. Roll on 1st September 2011.

HERE I AM LORD

Here I am Lord: responding to God's call to meet neighbours of other faiths. This conference arranged by the Churches Regional Commission's Inter-faith task group is in partnership with Churches Together in England, Bradford Churches for Dialogue and Diversity, Livability and Kirklees Faith Forum, featuring Celia Blackden (CTE) on "friendship and exchange", Helen Reid (BCDD) on "can a good neighbour be an evangelist", and will include a visit and lunch in a local gurdwara, temple or mosque. This is to resource churches in their interfaith work, aimed at lay people and clergy. We especially invite people who don't yet have interfaith experience. Those who do have such experience are also welcome! At the Methodist Mission, Huddersfield; Satur-

day October 2nd, 10.30-4.00 costing just £5, which includes lunch. To book contact Janet.Bryer@crc-online.org.uk, 0113 244 3413 or see online.

A TAIZÉ EVENING

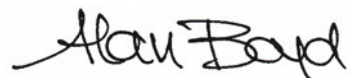
You're warmly invited to join us for Taizé prayer at the Methodist Mission, Lord Street, Huddersfield, on Tuesday, 19th October 2010, from 8.00pm to 9.00pm (Drinks will be available from 7.30pm).

Taizé Prayer is a simple form of ecumenical Christian prayer centred on Scripture, Silence, and Song, inspired by the monastic tradition in Taizé, France, which over the years has developed into a style that is both meditative and easily accessible to all people. It encourages people to be still in the presence of God. Taizé is the name of a small French village in Burgundy where Roger Schultz, a young seminary student founded a simple prayer community offering hospitality, refuge and reconciliation in response to the hostilities of the Second World War. As knowledge and appreciation of the community grew, more people from all over Europe came to pray with the brothers of Taizé, leading to the chanting of songs and prayers in a variety of languages. Now, thousands of young people from all over the world and a variety of Christian traditions come to Taizé. The brothers want to be a source of spiritual grounding for young adults who would go back to their own communities and live their lives with a deepened sense of God's purpose for them. "Prayer expressed in song remains one of the most essential expressions of our search for God. Short chants, repeated over and over, emphasize the meditative quality of prayer. They express in a few words a basic truth which is quickly grasped by the mind and gradually penetrates into one's whole being." Brother Roger (founder of Taizé)

ALPHA COURSE

A TOWN CENTRE CHURCHES ALPHA COURSE – a 10-week practical introduction to the Christian faith, designed primarily for non-churchgoers, begins soon. If you want to join the course and/or invite someone, then there's a LAUNCH EVENT and BUFFET in the Café at Huddersfield Methodist Mission Street at 6.30pm for 7.00pm on Thursday 16th September (details on 07983 818374 or 01484-531509 or kjhadders@btinternet.com). Very, very, importantly, you can pray for the course and celebrate our mission work together. So we ask you to join us at 4.00pm on Sunday 12th September at GLEDHOLT METHODIST CHURCH, Edgerton Grove Rd, Gledholt for a PRAYER EVENT and Celebration Service.

See the advert on the next page.



ALPHA COURSE

**At the Mission from 30th September to 9th December
6.30pm for 7.00pm**

You are invited to join a new Alpha course by Churches Together at the Huddersfield Methodist Mission. The Launch Evening, with an Invitation Event and supper, takes place at the Mission Cafe on Thursday, 16th September. Each evening begins with supper from 7.00pm and includes a talk on:

30 th September	Who is Jesus?
7 th October	Why did Jesus die?
14 th October	How can we have faith?
21 st October	Why and how do I pray?
28 th October	Half term break
4 th November	Why and how should I read the Bible?
11 th November	How does God guide us?
13 th November	Away Day at the Blackley Centre
18 th November	How can I resist evil?
25 th November	Why and how should I tell others?
2 nd December	Does God heal today?
9 th December	What about the Church?



If anyone would like to participate in ANY way or if you wish for further details, please get in touch.

There will be an inter-church **Service of Celebration and Prayer for Mission at 6.00pm on Sunday 12th September at Gledholt Methodist Church, Edgerton Grove Road, Gledholt, Huddersfield**. This will give the very best start to our programmes of outreach this Autumn. Please join us and share your past successes and future plans, for our encouragement and mutual prayer support. We hope to see you there!

Keith & Joan Hadcroft

20 Inglewood Avenue, Birkby, Huddersfield, West Yorkshire, HD2 2DS

Tel: 07983 818374

Email: alpha.huddersfield@ntlworld.com

Julia's Sponsored Bike Ride

Throughout her journey to Canterbury Cathedral on her bike, Julia has sent a detailed report on each day's progress. The reports are too lengthy to reproduce here, so only the highlights are given. Her diary in full will be produced in a separate document for all to see.

Day 1 Fri Aug 6: Julia was given a blessing by Rev David Earl on the steps of the church before setting off more or less on time. She assured us she had plenty of water, maps, a puncture outfit and a spare innertube. The weather was cloudy but dry. She had a picnic lunch in a churchyard with a friend and daughter and finally arrived at our ex curate Anna Wallis's house in Sheffield to stay the night.

Day 2 Sat Aug 7: After a difficult journey out of Sheffield and confusion between maps and real life, she finally ended up going in the right direction to Rother Country Park. After a good value lunch she continued via Sherwood Forest and Worksop and with only 3 miles to go she hit her first problem - a puncture! Luckily she was well prepared and got the spare innertube on ok. Her destination today was Rainworth near Mansfield where Hazel (a vicar) and John took her in for two nights with lovely food, hot showers and a comfy bed.





Day 3 Sun Aug 8: A rest day, and a visit to church with Hazel and John and time for repairs to the bike.

Day 4 Mon Aug 9: A special travellers' prayer from her hosts sent Julia on her way today. It was a nice sunny day but with a troublesome head wind. She met up with Neil her other half for lunch in Nottingham having cycled through Newstead Abbey grounds. After lunch Julia deviated from the Sustrans route and took a shorter route by some 30 miles and reached Loughborough in good time. Here she stayed the night with a friend Tracey who is an accountant, a traveller and a Christian.

Day 5 Tues Aug 10: For today's journey of 30 miles, the sun shone and the headwind had dropped. The route followed waterways and parks into Leicester and then on quiet suburban and country roads. After a picnic lunch under an oak tree, Julia rode along some tiny lanes and finally up a short hill to Church Langton, about 4 miles NE of Market Harborough, to be met by her hosts for the night, Stuart, a director of training for the C of E, and his wife Joyce, a doctor.

Day 6 Wed Aug 11: 45 miles to Milton Keynes - HALF-WAY. The route took her down 16 miles of cycle path and through a scary unlit tunnel to North-

ampton: the Brampton Valley Way. Here she met up with Anna and Ellie for lunch. In the afternoon it was country roads to the northern edge of Milton Keynes. She reported that the bicycle was going well, and her legs were holding up ok. 'It looks like I'm really going to get there!'

Day 7 Thur Aug 12: Milton Keynes to Luton, about 20 miles. The route to-day took Julia down the Grand Union Canal towpath to Leighton Buzzard. Although classed as a 'Centre of excellence' for cycling, the route she required was very badly sign posted and she wasted an hour cycling around until finally taking her own route down the A5 bus lanes to Dunstable and then to a comfortable, though noisy, hotel in Luton.

Day 8 Fri Aug 13: Luton to Cheshunt, 28 miles. The well signed tarmac cycleway out of Luton took Julia underneath huge jets from the airport, then along railway and riverside paths. Just past Welwyn Garden City, the rain came down in a deluge leaving a muddy trail and a muddy bike. Through Hertford and Ware the route turned South and went into the amazing wateriness of the Lee valley, Cheshunt, where Julia spent the night at the Youth Hostel there.

Day 9 Sat Aug 14: Cheshunt to Dartford, 30ish miles. From here the route is the National Cycle Route 1 following the River Lee down to London and then all the way to Canterbury. The day started rainy but cheered up. The cycleway disappeared every so often in overgrowth and at Walthamstow Marshes Julia had her second puncture. Lucky she'd repaired the old tube and was able to swap it again. On then to London and the thrill of crossing the Thames via the Greenwich foot tunnel and then a long, winding road to Dartford, where Julia stayed the night with another friend, Carol.

Day 10 Sun Aug 15: Dartford to Gillingham, roughly 25 miles. On a bright sunny morning, Julia set off on the route which took her through Dartford centre and down Route 1 on cycle tracks along busy main roads and on bridleways. After a coffee in Gravesend she joined a railway track leading to the Medway towns. After a visit to the cafe at Rochester Cathedral, Julia ended up the day at Gillingham where she spent her last night on the trail with Kate, another friend.

Day 11 Mon Aug 16: Gillingham to Canterbury 23ish miles. Julia set off early today with a strong tail wind to help her along which is probably as well as she seems prone to losing the route. Yet another puncture stopped her at Sittingbourne (she must be an expert now at mending them). So, to escape the glass strewn Sustrans route, she headed down the A2 and a B road into Whitstable (where Chris Sparks was a student nurse). Another seven miles of idyllic countryside and Julia made it to Canterbury in time for a bath AND afternoon tea, all before evensong at the Cathedral.

Well she's made it!! – Julia sends her thanks to all who supported her.

ABLY PROPERTY SERVICES

YOUR ABLE HANDYMAN

WE PROVIDE A RANGE OF SERVICES TO GET THE JOB DONE.

WHETHER YOU REQUIRE:

- **PLASTERING**
- **JOINERY**
- **PAINTING & DECORATING**
- **PLUMBING**
- **FENCING**
- **ROOFING**
- **TILING**
- **FLOORING**
- **AND MUCH MORE**



**PROPRIETOR: FLOYD LAWES
168 BIRCH LANE
BRADFORD BD5 8PF**

**TEL: 0800 328 4414
01274 721162
MOB: 0788 420 2097**

EMAIL: ABLYSERVICES@GYMAIL.COM



Jennie Coxon
Independent Funeral Director

**Serving Huddersfield and surrounding areas
 for over 17 years**

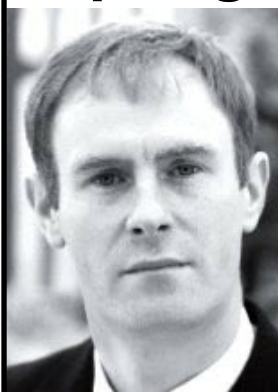
- Burials
- Cremations
- Green Funerals
- Memorials
- Private Chapel of Rest at Golcar and Sowood
- **24 hour service**

For no obligation advice and quotes

Tel: 01484 644650 Mobile: 07900 925763

17 North Drive, Golcar, Huddersfield HD7 4AX

Springhead Funeral Service



____ Lee Summers ____
Independent Caring Funeral Director

Affordable Cremation Funeral priced at £1650.00

(Including Disbursements:

Cremation Fee, Doctors Fees and Ministers Fee)

Here at Springhead Funeral Service we offer a caring, personal and affordable Cremation Funeral Service and will be pleased to offer

Please telephone **01422 327382** for an information chat

20 Claypit Lane, Sowood, Halifax



It's A Boy



Verity Quarmby, nee Baker (our previous music director) and husband Richard, have been blessed with a little boy. For all you broody women out there, here are the statistics:

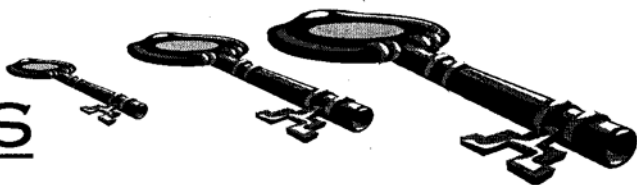
Name: Edward Alexander Lyall Quarmby (Ted)
Born in Calderdale Royal, at 00:29 on the 26th of June (three days early).

Weight: 7lb 6oz at birth
Three weeks later, he weighed over 8 pounds.

THE

KEYS

RESTAURANT



OPENING TIMES:

MON – FRI: 9:00 – LATE AFTERNOON

SATURDAY: 8:00 – LATE AFTERNOON

AVAILABLE FOR PRIVATE BOOKINGS

SITUATED IN THE CRYPT OF ST. PETER'S CHURCH, WE OFFER YOU A FRIENDLY AND WELCOMING ATMOSPHERE IN A UNIQUE ENVIRONMENT, WHETHER YOU'RE LOOKING TO ENJOY BREAKFAST OR LUNCH.

CONTACT DETAILS:

TEL: 01484 516677

EMAIL: VICKI@KEYSRESTAURANT.COM

WEBSITE: WWW.KEYSRESTAURANT.COM

THE
KEYS
RESTAURANT

Limited to one voucher per person.
Offer expires: 27-10-2010

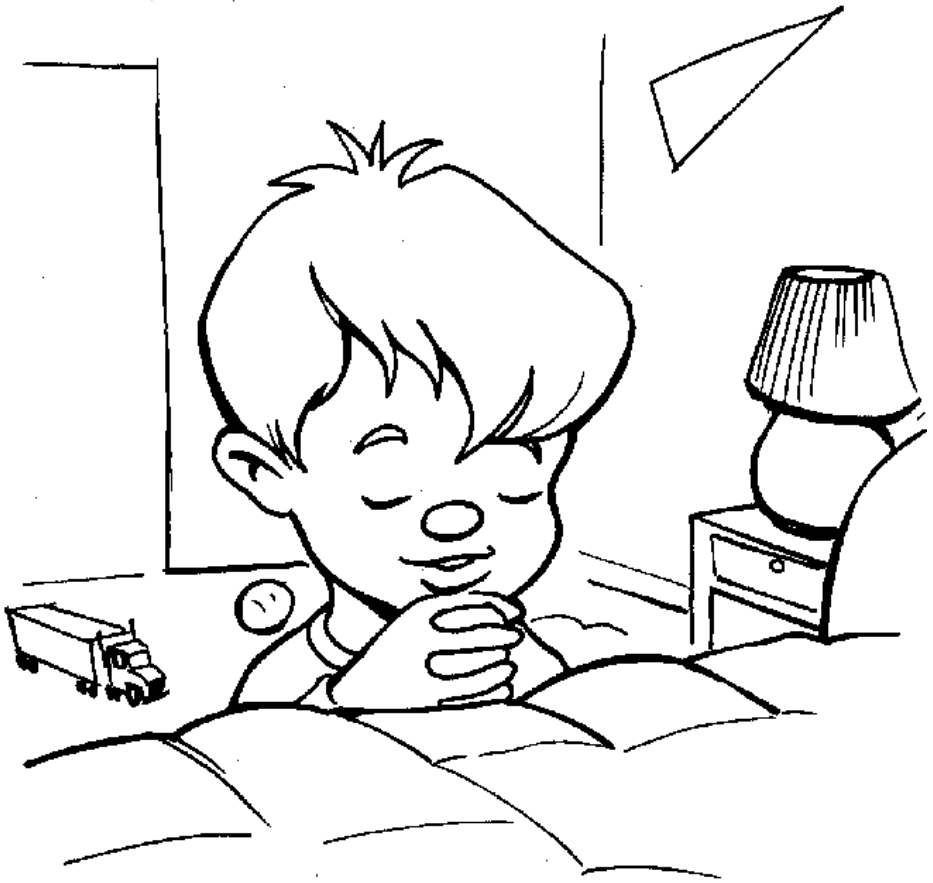
BUY ONE, GET
ONE
FREE!

****VOUCHER****

ON THE FAMOUS KEYS FULL
ENGLISH BREAKFAST

INCLUDING: BACON, SAUSAGE, BEANS,
MUSHROOM, EGG, HASH BROWN,
BLACK PUDDING AND TOAST.
SERVED UNTIL 11:30

KID'S CORNER



Colour the little boy praying

**Doctor, doctor, I've been stung by a bee. Shall I
put some ointment on it?**

Don't be silly - it must be miles away by now.

Knock Knock

Who's there ? Bill !

Bill who ? Bill-tup area !

PUZZLE PAGE

4		8			7	1		
		7	1	3	9			
					5			
5	7						3	1
1	3					4	8	9
			9					
			8		6	5		
		1	5			7		2

Try this sudoku. It is rated as moderate. No answers will be published as the author believes that when you have

Try to fill in the missing numbers.

Use the numbers 1 through 9 to complete the equations.

Each number is only used once.

Each row is a maths equation. Work from left to right.

Each column is a maths equation. Work from top to bottom.

	x		/		12
x		-		+	
	+		x		51
+		-		x	
	+		x		12
61		-9		5	

NEWS FROM YOUR PCC

Several extraordinary meetings took place over the last few weeks. The first one was with the archdeacon of Halifax who came to advise us all on what we need to do during the Interregnum. Also present at the meeting was our 'Patron' who will be helping us with the selection process for the new Vicar.

Our first job was to produce the Parish Profile, a document describing the church and the sort of vicar we would like. Three late meetings thrashed this out and it is now with the Archdeacon for final vetting concerning CofE policy matters, before publishing on the Diocesan website to be used to advertise the job.

On the finance side, we have lost our customer for the car park spaces we hire out on Venn Street but we do have interest being shown from other takers. We have received a grant for £2,500 from the John Pilling Trust for the organ project.

Were you near the church on Tuesday 3 August. There was a Chinese funeral. The horse drawn hearse was quite a spectacle drawing much attention from passers by. The church was full of people from far afield including China to say farewell to Mr Qin Zhang. Our condolences go out to his family and friends.





Leonard Senior

(Crosland Moor)

LICENSED
APHC
MEMBER
Licensed No. 118 1471002

All types of heating installed

Sanitary, Heating & Electrical Engineer

Estimates for all classes of work

**34 WILSHAW ROAD
WILSHAW, MELTHAM
TEL: 852111 or 852618**

Partners: J.R.Senior and R.Senior

MAGAZINE ADVERTISING

Do you know any one or a local business eg taxi firm, your hair-dresser etc who would like to advertise in our new Church Magazine while at the same time supporting their local church, a registered charity? Our prices are as follows, order 5 and get one free:

	£ per insert	£ per 6 inserts
Full page	£7.00	£35.00
Half page	£4.00	£20.00
Quarter page	£2.00	£10.00

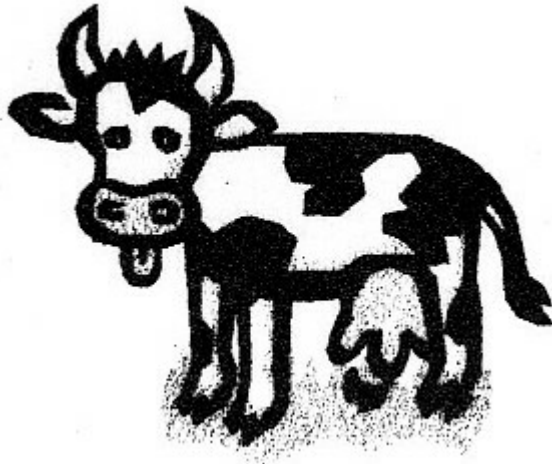


They can contact us by email: sp@spchadwick.force9.co.uk

Or through the parish office:

Phone 0148 442 7964. Email: huddspc@btconnect.com

Telephone: (01484) 300448
Mobile: 07966 672165



Jeremy Smith

Milk, Pop and Dairy Produce

Delivered to your door !

50 Benomley Road, Almondbury, Huddersfield. HD5 8LS

Beauty Within @

robert calvin
15 westgate, huddersfield, hd1 1np



FINANCE MATTERS

THE EMERGENCY BUDGET AND THE CHURCH



Every time the Government has another budget it would seem the Church is affected. I have therefore drawn together various points from recent budgets that will impact on the Church.

Gift Aid - The transitional Gift Aid grant making up the difference between the previous standard tax rate (22%) and the current 20% rate is due to end in April 2011. For us this will mean a fall of 11.3% in the Gift Aid tax relief after 5th April next year.

Similarly the **Listed Places of Worship Grant Scheme** comes to an end in April 2011. This means that we will no longer get the VAT tax relief on any major repairs, or renovations. There is also therefore a sense of urgency to complete the work in hand on the Ceiling and Church Organ prior to next April.

The increase of £1,000 in the **personal allowance** will bring some people under the tax threshold, It is important to remember that a person can only make a gift aid donation if they are a taxpayer.

There has to be some good news! The increase in **capital gains tax** means that there are many tax advantages to giving shares, land and property to charities. So if you bought shares when the utilities etc. were privatised and they are sitting gathering dust, then the Church can put them to good use.

Finally the **Flood and Water Management Act** now exempts charities from the new pricing structures. This means we are saved from the prospect of having to pay for the rainwater which drains from the Church roof.

If you have any questions relating to the above article I am always available after Church on a Sunday or I can be contacted through the office.

R Anne John (Hon. Treasurer).

GIFT AID

We have just claimed **£3,595.73** from the Inland Revenue from the Gift Aid Scheme for the period April to June. This shows how important the scheme is to us.

How does it work?

If you are a tax payer, you sign a Gift Aid Declaration. We then need to record all the donations you give to the church either through bank standing orders or through our envelope scheme. This data is treated as highly confidential, not even the Vicar has access to this information.

I then calculate how much income tax you would have paid on your donations and claim this back from the tax man. Simple!! If there is anyone who pays income tax and has not yet signed a Gift Aid Declaration, PLEASE have a word with me. It won't cost you another penny.

Peter Chadwick - Gift Aid Officer

Ceiling repairs and organ restoration

Because of our success in our grant applications and your generosity with our fund raising we will be starting the work very shortly. Please continue to support all those who are working on this project and please be patient when the work begins!

The work will affect some of our special services such as the Remembrance Day service which will again be located in the Town Hall. However, we are still confident that the work will be completed by next Easter so look forward to a celebration at:

EASTER 2011





Harvest Festival

Sunday 3 October 2010 at 10am



The Harvest Festival service this year will be at 10am on Sunday the 3rd of October. The preacher for this event will be our very own Reverend David Earl, dragged out of retirement once again.

As usual bring your harvest contributions which will be donated to the Mission for the Welcome Centre after the service.

Sat 2 Oct Harvest Meal at the John's house in Grimescar.
(see notices).



A Wine Tasting Evening

With your host - Robert Holt
HOULTS.COM

4 Castlegate Retail Park
Huddersfield HD1 5AN

At 7.30 pm on Friday 10 September
Tickets £7.50



Proceeds to the repair of St. Peter's Parish Church

HPC WEEKLY SERVICES

Sunday

8.00am

Holy Communion

10.00am

Parish Eucharist.

The choir is in attendance during university term time for this service and there is usually a short organ recital at the end of the service. Coffee and biscuits are available during mix and mingle after the service.

Wednesday

12.35pm

Holy Communion



CHURCH OPENING HOURS

The church is open to the public for private prayer and reflection every Monday to Friday between 10.00am and 4.00pm and on Saturdays between 10.00am and 2.00pm. Everyone is welcome, regardless of religious beliefs, even if it is just to admire our beautiful building.

Be aware though that there are CCTV cameras in operation within the church throughout the day and night.

MISSION SERVICES

Daily:

Prayer Chapel is open for your own use.

Sundays:

10.30am - Morning Worship

Mondays:

11.00am to 11.30am - Guided prayer in the Chapel

Monthly:

Bible study groups in homes.